

General Layout of Paradip Port (BA538)
 For reference only: Not to be used for navigation





Contact Information

CHAIRMAN

Paradip Port Trust
Paradip Port: 754142, Odisha, India
Phone: 06722-222046/222127
Telefax: 06722-222256
E-mail: chmppt@paradipport.gov.in

TRAFFIC MANAGER

Paradip Port Trust
Paradip Port: 754142, Odisha, India
Phone: 06722-222151
Telefax: 06722-222112
E-mail: tmppt@paradipport.gov.in

DEPUTY CHAIRMAN

Paradip Port Trust
Paradip Port: 754142, Odisha, India
Phone: 06722-222017
Telefax: 06722-222247
E-mail: dychmppt@paradipport.gov.in

PUBLIC RELATION OFFICER

Paradip Port Trust
Paradip Port: 754142, Odisha, India
Phone: 06722-222242
Telefax: 06722-222242
E-mail: proppt@paradipport.gov.in

Port Information

Port : PARADEEP
UN Locator code : INPPT
Location : Lat: 20°15'-55. 44" N / Long: 86°40'-34. 62" E

Pilot Boarding Ground : Berthing inside Harbour (port)
1. Within 2 nautical miles from break water
2. Port control may change position depending on draft.

Berthing for SPM
1. Within 2 nautical mile from SPM

Cargo handled And Berth Information

Berth No.	FB-I (FERTILIZER BERTH-I)
LOA	230 Meters
Beam	33 Meters
Deadweight	NA
Draft (FW / BW / SW)	12.5 Meters
Displacement	NA
Loading / discharging Arm /Size of connection/arm	Phos Acid: 8 inches / 150 lb. X 02 Nos. Hose, Sul Acid: 8 inches / 150 lb. X 01 No Hose, Ammonia: 8 inches / 300 lb. X 01 No Arm
Any special approval reqd from terminal	NIL
Night Restriction	NO
Priority	NIL
Max/Min PBL	NA
Mooring Pattern	As per IOM Regulations
Any Other Restriction	To accommodate liquid cargo tankers concerned receivers use to shift working bulk cargo discharging vessels to anchorage on their account.
Remarks	PPL (PARADIP PHOSPHATES LIMITED)- CAPTIVE BERTH

Berth No.

LOA

Beam

Deadweight

Draft (FW / BW / SW)

Displacement

Loading / discharging Arm /Size of connection/arm

Any special approval reqd. from terminal

Night Restriction

Priority

Max/Min PBL

Mooring Pattern

Any Other Restriction

Remarks

FB-II (FERTILIZER BERTH-II)

230 Meters

33 Meters

NA

12.5 Meters

NA

Phos Acid: 8 inches / 150 lb. X 02 Nos. Hose,

Sul Acid: 8 inches / 150 lb. X 02 Nos. Hose,

Ammonia: 12 inches / 300 lb. X 01 No Arm

NIL

NO

NIL

NA

As per IOM Regulations

To accommodate liquid cargo tankers concerned receivers use to shift working bulk cargo discharging vessels to anchorage on their account.

IFFCO (INDIAN FARMERS FERTILIZERS CO-OPERATIVE LIMITED) - CAPTIVE BERTH



Berth No.

LOA

Beam

Deadweight

Draft (FW / BW / SW)

Displacement

Loading / discharging Arm /Size of connection/arm

Any special approval reqd from terminal

Night Restriction

Priority

Max/Min PBL

Any Other Restriction

Remarks

NOJ (NORTH OIL JETTY)

230 Meters

33 Meters

NA

13.5 Meters

NA

HSD: 8 inches X 02 Nos. Hose,

SKO: 8 inches X 01 No Hose,

MS: 8 inches X 02 No Hose

NIL

NO

NIL

NA

An aerial photograph of a port area. A large industrial facility, possibly a refinery or chemical plant, is situated along a body of water. The facility consists of numerous large, rectangular structures and a complex network of pipes and roads. The surrounding area includes some residential or commercial buildings and green spaces. The water is a deep blue color, and the sky is clear.

Berth No.

LOA

Beam

Deadweight

Draft (FW / BW / SW)

Displacement

Loading / discharging Arm /Size of connection/arm

Any special approval reqd. from terminal

Night Restriction

Priority

Max/Min PBL

Remarks

SPM-I

370 Meters

60 Meters

Maximum 3,20,000 Mt And Minimum 80,000 Mt.

21 Meters

NA

CRUDE OIL: 16 inches X 02 Nos Hoses

NIL

BERTHING (DAYLIGHT) & SOME TIME

SAILING (AT NIGHT)

NIL

NA

IOCL (PIPELINE DIVISION)



Berth No.

LOA

Beam

Deadweight

Draft (FW / BW / SW)

Displacement

Loading / discharging Arm /Size of connection/arm

Any special approval reqd. from terminal

Night Restriction

Priority

Max/Min PBL

Mooring Pattern

Any Other Restriction

Remarks

SPM-II

370 Meters

65 Meters

Maximum 3,20,000 Mt And Minimum 80,000 Mt.

23 MTRS

NA

CRUDE OIL: 16 inches X 02 Nos. Hoses

NIL

BERTHING (DAYLIGHT) & SOME TIME

SAILING (AT NIGHT)

NIL

NA

PLS SEE NOTE BELOW

IOCL (PIPELINE DIVISION)



Berth No.

LOA

Beam

Deadweight

Draft (FW / BW / SW)

Displacement

Loading / discharging Arm /Size of connection/arm

Any special approval reqd from terminal

Night Restriction

Priority

Max/MinPBL

Mooring Pattern

Any Other Restriction

Remarks

Misc.

SPM-III

370 Meters

65 Meters

Maximum 3,20,000 Mt And Minimum 80,000 Mt.

23 Meters

NA

CRUDE OIL: 16 inches X 02 Nos. Hoses

NIL

BERTHING (DAYLIGHT) & SOME TIME

SAILING (AT NIGHT)

NIL

NA

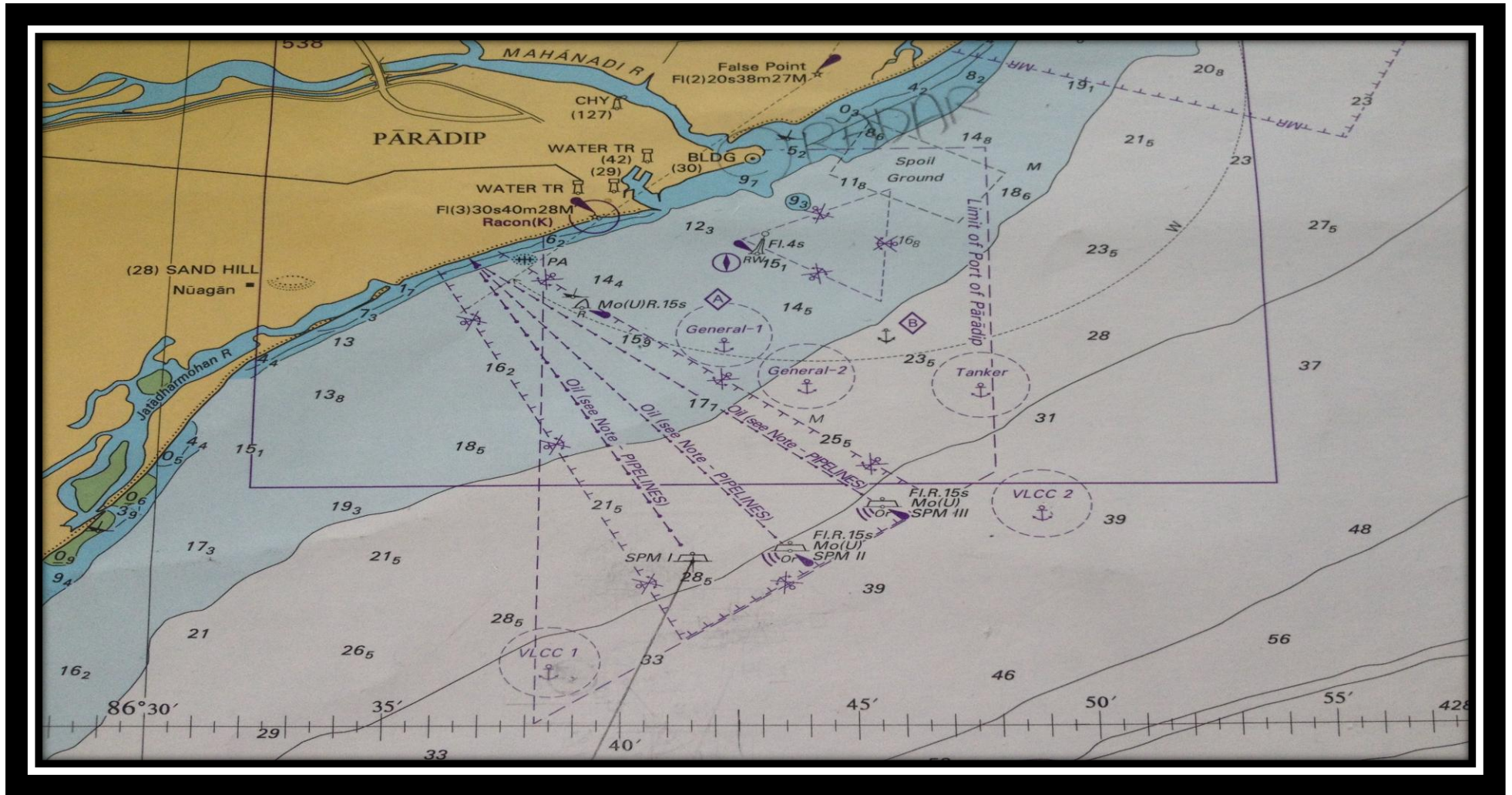
PLS SEE NOTE BELOW

IOCL (PIPELINE DIVISION)

An aerial photograph showing a coastal industrial area. A large body of water, possibly a harbor or bay, is visible in the center and right. The water is dark blue. To the left, there is a sandy beach and a residential area with many small buildings. In the center and right, there are large industrial structures, including what appears to be a large shipyard or dock with several long piers extending into the water. The land is a mix of green fields and brownish areas, possibly due to soil or vegetation. The overall scene is a typical coastal industrial zone.

NOTE (MOORING ROPE) - FOR SPM:

1. The vessel should have two new pairs of minimum 80 mm ropes. The ropes must be floating in nature and of sufficient strength for pull back operation. One pair of the rope will be used for pull back operation and another pair will be kept as standby for use in exigency.
2. The pair of ropes should be of standard length of 220 m and of same material.
3. Vessel should have a pair of good quality mandal shackle for pull back operation.
4. The vessel should be ready with two pairs of ropes and a pair of mandal shackle at the aft of the vessel before the Pilots boards the vessel so that there is no delay while making fast the aft tug.



General Layout of Paradip Port (BA538)
 For reference only: Not to be used for navigation